



5,114 RSF

OFFICE / RETAIL SPACE AVAILABLE FOR LEASE

**120 KERCHEVAL AVENUE
GROSSE POINTE FARMS, MI**

PROPERTY INFORMATION

- Located at the top of The Hill in Grosse Pointe Farms
- Exterior building signage available
- Attractive high end design and common area finishes
- 5,114 rsf available on the first floor
- Current tenants include Morgan Stanley, the building's management/owner, and the Dickie McCamey Law Firm
- Reserved and covered on site parking available

PROPERTY HIGHLIGHTS

- Existing high-end finishes include marble and granite common area fixtures
- Developed and managed by the Russell Development Company located within the building

CONTACT US

MATTHEW BUSLEPP
Vice President
T: +1 313 209 4123
matt.buslepp@avisonyoung.com

ROBERT DANFORTH
Senior Associate
T: +1 313 209 4121
robert.danforth@avisonyoung.com



PROPERTY AERIAL



CONTACT US

MATTHEW BUSLEPP
Vice President
T: +1 313 209 4123
matt.buslepp@avisonyoung.com

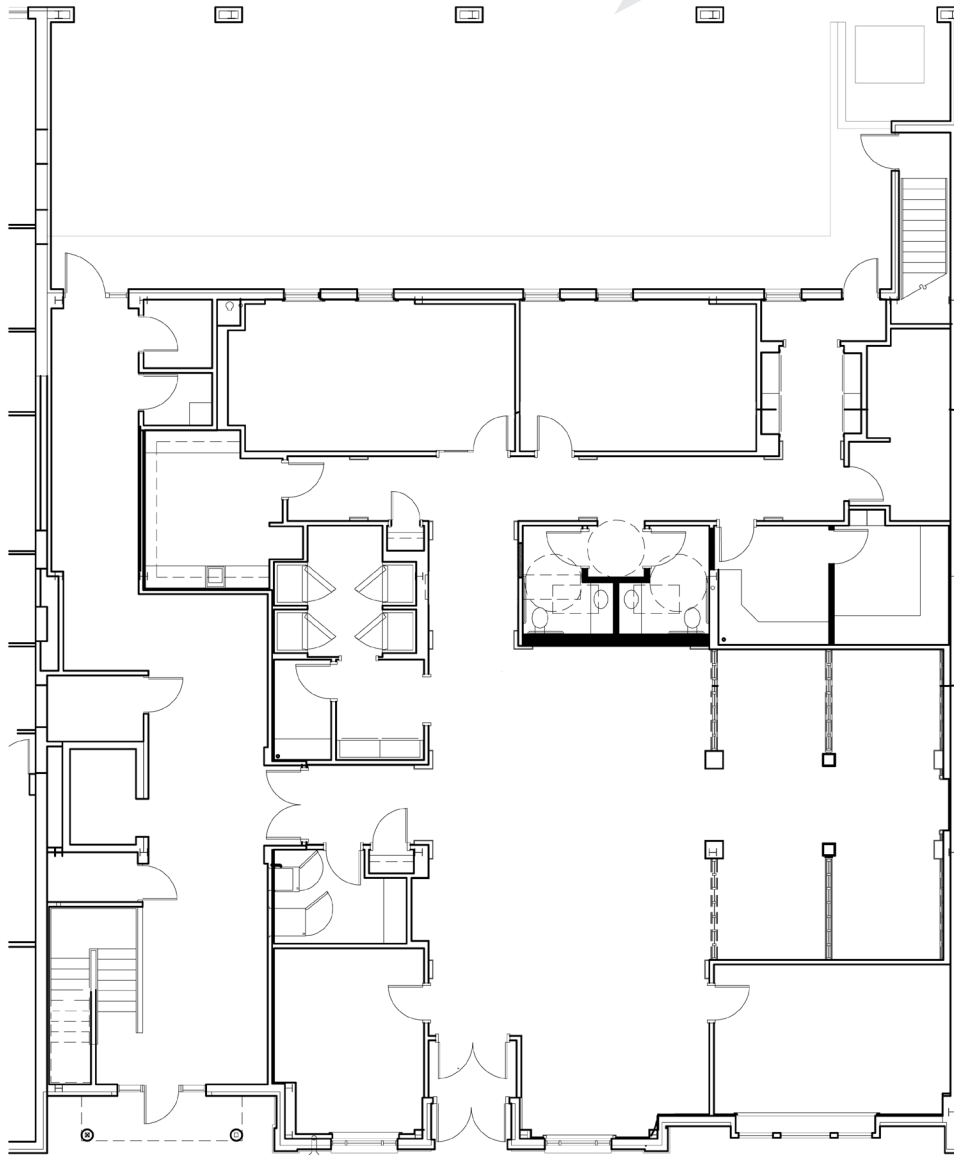
ROBERT DANFORTH
Senior Associate
T: +1 313 209 4121
robert.danforth@avisonyoung.com



PROPERTY FLOOR PLANS

FIRST FLOOR
5,114 SF AVAILABLE

Private
Covered
Parking
Spaces



Shared
Entrance
to Second
Floor

Private
Entrance
to First
Floor

CONTACT US

MATTHEW BUSLEPP
Vice President
T: +1 313 209 4123
matt.buslepp@avisonyoung.com

ROBERT DANFORTH
Senior Associate
T: +1 313 209 4121
robert.danforth@avisonyoung.com



STACKING PLAN

Signage Available



PROPERTY PHOTOS

FIRST FLOOR



CONTACT US

MATTHEW BUSLEPP
Vice President
T: +1 313 209 4123
matt.buslepp@avisonyoung.com

ROBERT DANFORTH
Senior Associate
T: +1 313 209 4121
robert.danforth@avisonyoung.com



PARKING



CONTACT US

MATTHEW BUSLEPP
Vice President
T: +1 313 209 4123
matt.buslepp@avisonyoung.com

ROBERT DANFORTH
Senior Associate
T: +1 313 209 4121
robert.danforth@avisonyoung.com

